

MORMON ISLAND STATE REC AREA

[Hamilton County]

Phone: (308) 385-6211

Email: ngpc.mormon.island@nebraska.gov

Set GPS to W98.370770°, N 40.824610°

TYPE: Public State Park. Handicap Access. pets welcome.

DIRECTIONS: good paved interior rds. good paved access rd. (South of town) From Jct of I-80 & US-281 (exit 312), N 0.2 mi on US-281 (R). Entrance fee required.

SITES: 38 available: 38 paved sites.no patios, some shade, 14 day max stay, 8 pull-thrus (20 x 40), Back-ins (20 x 40), 34 electric (30/50 amps), Table at site, BBQ at site.

FACILITIES: restrooms and showers, dumping station, public phone, laundry.

RECREATION: Mormon Lake, lake, swimming, fishing, playground, pavilion.

OPEN: Open all year.

RATES: \$12 to \$18 (Last year's).

Visa, MasterCard.

MORMON ISLAND



State Recreation Area

NEBRASKA
— GAME  PARKS —

See You Out There

Named for the winter stopover used by Mormon emigrants heading westward, Mormon Island State Recreation Area (SRA) offers comfort and conveniences to campers and other travelers on Interstate 80, as part of Nebraska's unique "Chain of Lakes."

In 1884-85, a group of Mormons established a campsite about four miles downstream from the present recreation area, prompting local settlers to dub the locale Mormon Island. The party started too late in the year to reach the Great Salt Lake and stopped for the winter, encouraged by the open stream and abundant timber in the area. Among the last Mormons to use the Platte River trail to Salt Lake, they were following a route blazed by Brigham Young in 1846. He led a company of Mormon pioneers from Nauvoo, Ill., in search of a new Zion. The Mormon Trail, along the north side of the Platte River, stretched nearly 500

miles across Nebraska and would be followed by thousands of other Mormon settlers. With development of I-80 in the early 1960s, then Nebraska Game and Parks Commission saw the potential to create recreation and beauty out of the "borrow pits" left as fill material was removed for construction. These pits would quickly fill with water because of the high water table in the Platte Valley.

The first of these areas developed was Mormon Island. This area and companion Windmill SRA near Gibbon are the most intensely developed because of their ready access to travelers. Similar less developed areas also serve campers and picnickers, while many less accessible sites are set aside as state wildlife areas for hunters and anglers. Stretching for 160 miles between Grand Island and Hershey the size of these lakes ranges from six acres to Mormon Island's 46 acres.

This same area also hosts a spectacular gathering each spring, as hundreds of thousands of sandhill cranes stop to rest and pursue their courtship rituals. The world's largest concentration of these magnificent birds draws thousands of visitors to the region every year. Mormon Island lies on the eastern edge of this migration route.

Arriving in early to mid-February, the numbers peak about mid to late March. The cranes spend their days feeding and engaging in colorful courtship dances. After the first of April, the birds start flying to northern breeding grounds and are usually gone by mid-April.

A variety of geese, ducks and other waterfowl also come to the area before heading farther north. Ask park personnel for more information about the best times and locations to view these impressive wildlife displays.

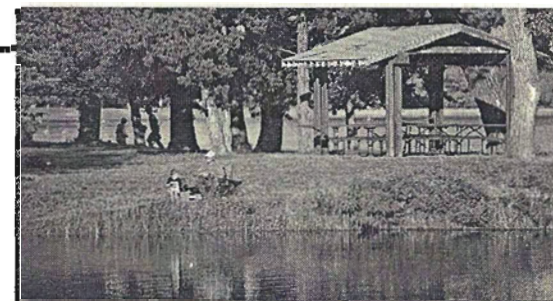
Welcome to
Mormon Island
 State Recreation Area
 NEBRASKA GAME AND PARKS COMMISSION

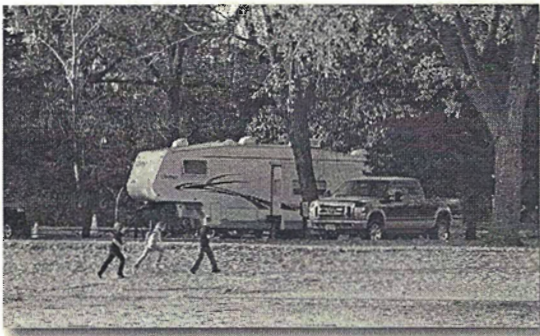
RECREATION LAKE

NEBRASKA
 GAME AND PARKS
 See You Out There

KEY

- INFORMATION BOOTH
- PLAYGROUND
- TENT CAMPING
- PARKING
- RESTROOMS
- SANITARY DUMP
- SHOWER BUILDING
- PHONE
- SWIMMING BEACH





CAMPING

- Mormon Island SRA offers modern camping facilities, restrooms, 30 and 50 amp electrical hookups, showers, dump station and laundry.
- Abundant picnic tables and fire grates are available.
- Seventeen modern campsites may be reserved. Seventeen modern campsites are available on a first come, first serve basis. There are 18 tent sites throughout the area.
- Stays are limited to 14 consecutive days, except for designated extended-stay campsites.
- Fees are charged for camping.
- Guests can check availability online and make campground reservations 24 hours a day, seven days a week, at OutdoorNebraska.org, except for year-to-date reservations, which begin at 9 a.m. CST.
- To speak with a representative, call the Reservation Call Center at 402-471-1414. It is open Monday through Friday, 9 a.m.-6 p.m. CST, closed on state holidays.

PARK ENTRY PERMIT

- All vehicles entering the park must have a park entry permit.
- Permits are available at the area office, any Game and Parks office, permit vendors, and at OutdoorNebraska.org.

Any program that receives federal funding from the National Park Service, or the United States Fish and Wildlife Service prohibits unlawful discrimination on the basis of race, color, religion, age, gender, marital status, national origin, age, disability or political affiliation. Any person who believes he or she has been discriminated against in any program, activity, facility, or service, should contact the Nebraska Game and Parks Commission, Lincoln, NE 402-471-0641, the Equal Opportunity Commission, Lincoln, NE 402-471-2024, TTY/TDD 402-471-4693; United States Fish Wildlife Service, Civil Rights Coordinator, 4401 N. Fairfax Drive, Arlington, VA 22203; Director, Equal Opportunity Program, U.S. Department of Interior, National Park Service, 1849 C Street NW, Mail Code 0008, Washington, D.C. 20240-0001.

FISHING AND BOATING

- Fishing and power boats are allowed. Speed limit is 5 mph (no wake).
- Boat ramps are available on Lakes #1 and #2.
- Fish species include largemouth bass, walleye, channel catfish and bluegill.
- Anglers, except residents younger than age 16, must have a Nebraska fishing license.

OTHER ACTIVITIES

- There are day-use picnic facilities, a shelter house and restrooms.
- Swimming is unsupervised and allowed only at marked swimming beach. Change houses are provided.
- Pets are permitted but must be kept on a leash no more than 6 feet long.
- Vehicles must remain on designated roads.
- Fireworks and minibikes are prohibited.

MORE INFORMATION

For information on Nebraska's other state park areas, ask at the registration desk, visit OutdoorNebraska.org or call toll-free 800-826-PARK (7275).

MORMAN ISLAND STATE RECREATION AREA

7425 S. U.S. Hwy 281

Doniphan, NE 68832-9526

call 308-385-6211

or e-mail:

ngpc.mormon.island@nebraska.gov

